

This is an example of a hamster cell line for teaching purposes.

The CHO-K1 cell line was derived as a subclone from the parental CHO cell line initiated from a biopsy of an ovary of an adult Chinese hamster by T. T. Puck in 1957.

<http://www.atcc.org/Products/All/CCL-61.aspx>

Keywords: [transfection](#) [hamster](#) [ovary](#)

Expand

Cell Line Annotations

Organism	Hamster (<i>Cricetulus griseus</i>)
Tissue	Ovary
Growth Properties	adherent
Morphology	epithelial-like
Antibiotics	<i>Not provided</i>
Trypsin	0.25% (w/v) Trypsin- 0.53 mM EDTA
Passage Number	<i>Not provided</i>
Splitting Ratio	1:4 to 1:8
Media Change	Every 2 to 3 days
Media Recipe	ATCC-formulated F-12K Medium, Catalog No. 30-2004 + 10%FBS
Mycoplasma	Not contaminated
Biosafety Level	1

Source

Commercial	ATCC
Catalog #	ATCC® CCL-61™
Stock Date	August 14, 2013

Inventory Location

Private

Publications / Citations

1. [CLONAL GROWTH OF MAMMALIAN CELLS IN A CHEMICALLY DEFINED, SYNTHETIC MEDIUM.](#) HAM RG (1965) *Proc Natl Acad Sci U S A* : 288-93
 › Primary publication · [14294058](#) (PubMed) · [PMC219509](#) (PubMed Central) · Added on 9/24/2013
2. [Genetics of somatic mammalian cells. III. Long-term cultivation of euploid cells from human and animal subjects.](#) PUCK TT, CIECIURA SJ, ROBINSON A (1958) *J Exp Med* **108**(6): 945-56
 › Primary publication · [13598821](#) (PubMed) · [PMC2136918](#) (PubMed Central) · Added on 8/14/2013
3. [Genetics of somatic mammalian cells, VII. Induction and isolation of nutritional mutants in Chinese hamster cells.](#) Kao FT, Puck TT (1968) *Proc Natl Acad Sci U S A* **60**(4): 1275-81
 › Primary publication · [5244736](#) (PubMed) · [PMC224914](#) (PubMed Central) · Added on 8/14/2013

MeSH Terms

[Animals](#) [Bromodeoxyuridine](#) [Cell Culture Techniques](#)
[Cell Division](#) [Chromosomes](#) [Clone Cells](#) [Cricetinae](#)
[Culture Media](#) [Culture Techniques](#) [Female](#) [Humans](#)
[L Cells \(Cell Line\)](#) [Mammals](#) [Metabolism](#) [Mice](#)
[Mutagens](#) [Nitroso Compounds](#) [Ovary](#) [Research](#)
[Tissue Culture Techniques](#)

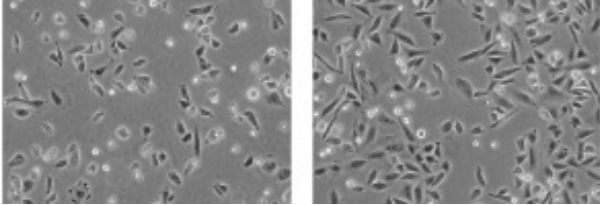
Attachments



[CCL61.pdf](#) - Added on August 14, 2013 at 10:35 AM by [Jill Lindner](#)



[CHO_K1.png](#) - Added on August 14, 2013 at 10:30 AM by [Jill Lindner](#)



[msds_animal.pdf](#) - Added on August 14, 2013 at 10:36 AM by [Jill Lindner](#)
