

Release notes for Version 2.1

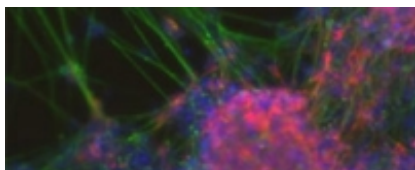
Keywords: [new features](#) [release notes](#)

[Expand](#)

We have resolved 186 ticketed new features, tasks, bugs, or improvements. Significant improvements are listed below.

Highlights

Animal Cell Lines



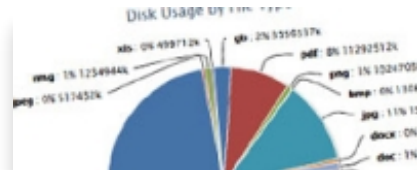
Introducing a new resource type is always exciting. We have worked with multiple labs to establish what we hope will be a flexible model for collecting key annotations pertaining to animal cell lines.

Flexible Sharing



Say goodbye to subscriptions. Everything is simply called a share now. Collections are just like any other resource and can actually nested as well. In short, creating resources is faster and sharing is easier.

Disk Usage Monitor



While there is no official disk usage quota for the time being, we have put in place tools for formal communities to monitor their disk usage. This functionality will soon be coming to workgroups as well.

New Features

- **New resource type – Cell Lines.** In addition to antibodies, vectors, documents and mice we have added a new resource type for cell lines. You may fully annotate your cell lines by including a description, source, characterization, culture conditions and more. See examples:
 - CHO-K1 (Chinese hamster ovary cell line)
 - 4T1 (mouse mammary gland cell line)
 - Ca Ski (human cervical cell line)
- **New resource type – Collection.** Previously each resource had to reside within a collection. Now the user may choose whether or not to place a resource into a collection. The collection is now another type of resource - add a collection and then add resources to that collection.
- **Create individual resources.** Resources may be created without placing them into a collection; however, the option of organizing resources within collections is still available.
- **Monitor your disk usage.** From your community dashboard page, click on the disk usage link in the Community Statistics section and view the disk usage by file type and your total disk usage.
- **Testimonials.** See what people are saying about Labnodes by clicking on the Testimonials link in the footer menu of the home page. Here's one example: "It's (Labnodes) so, sooooo EASY! I love it."
- **Receive training and release announcements.** Choose whether you wish to receive email announcements about training opportunities or release information.
- **Interactive editing of community profile image.** We have added a new image editor that will allow you to select the image orientation and crop community and workgroup profile images.

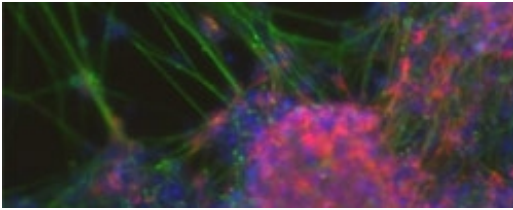
Improvements

- **Homepage improvements.** We have re-organized our homepage to provide more information to describe Labnodes. Don't forget to login and check out your dashboard for the latest information that pertains to you.

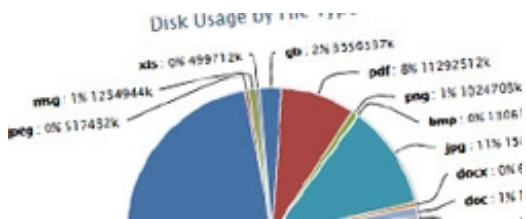
- **Performance improvements.** In order to address performance issues, we have made a wide variety of improvements to speed up the backend parsing times as well as front-end content delivery. Some of these changes have resulted in less “counts” being displayed throughout the site.
- **VCSCB Landing Page Updates.**
- **Allow short names in LDAP searches.** We now support 2-character last name searches via LDAP.
- **Layout and design updates.**
- **Workgroup default profile image.** When creating a new workgroup, if a user does not have a convenient photo to use, a default workgroup profile image will be used instead. This lessens the burden of looking for what was a required image.
- **Print-friendly pages.** Improvements were made to support a wider range of browser print modes, mainly to do with margins. Also, the Labnodes logo is now the default print logo.
- **Chiefs are now called Owners.** We have changed the name of the owner of a community from chief to owner. Thus, the three Labnodes roles are now Owners, Leaders and Members.
- **Navigation click instead of hover.** Due to troubles keeping navigation items actively displayed, as a result of a wandering computer mouse or touchpad, we have changed the behavior of the navigation bar to respond to mouse-click events. This also makes it easier for touch device users to interact with the navigation bar.
- **Community name added to Share Meetings window.** We added the name of the community when viewing your shared meetings, for clarity of ownership. For example, the shared meeting now reads, “Meetings – VCSCB Informatics.”
- **Community acronyms added.** The community acronym has been added to resource/collection lists, for clarity of ownership.
- **Latest members list expanded.** Now you may view all of the new Labnodes members, whether they are affiliated to a formal community or not.
- **Language improvements.** We have streamlined and improved vocabulary and semantics in order to provide clearer and more user-friendly language.
- **Share search field more visible.** We have moved the search field in the Share Resource window so that it is easier to view and thus, easier to use.
- **Update to antibody resource type**
 - **New naming scheme.** We have adopted a new (and draft) naming nomenclature, in response to feedback obtained from antibody experts at Vanderbilt. All antibodies have been automatically renamed, since the names are built from the resource metadata components.
 - **Clone ID/name** - You may now record your antibody clone name/ID when creating an antibody resource.
 - **Concentration field added.**
 - **Primary vs. Secondary category.** In addition to monoclonal and polyclonal antibody types, you may now create antibody resources for secondary antibodies.
 - **Antigen and antigen source lists improved.** Improvements were made to the controlled vocabularies of these important components.
 - **Flexibility added to characterization form.** Images and protocols dropped as a requirement to adding a usage.
- **Reagent Resources Standardization** – We have made standardization efforts on the user interface and data models for antibodies, cell lines, mouse strains and vectors. While we have more to do, we think you will find these resources even easier to use.
- **Actions button drop down simplified.** We have made the Action items more succinct, and therefore easier and quicker to use.
- **Increased the number of communities/view.** The community listing page now contains more communities/page, which minimizes scrolling down in order to view more items.
- **Radio buttons replace dropdown for resource subtypes.** Some resources, such as documents, have subtypes. These subtypes are now visible (no longer a drop down) on the Add a Resource form and selectable by a radio button, thus reducing the action from two clicks to one.
- **Community/Workgroup dashboard.** The dashboard has been revamped to more closely emulate the member dashboard, thus providing a more consistent user experience.
- **Support section in navigation.** Users can now quickly find help topics and support via a navigation bar support link.
- **Resource PDFs.** PDF documents can be generated on any resource a user can view, not just edit.
- **Numerous minor fixes.**

Attachments

 **cellline.jpg** - Added on August 14, 2013 at 8:44 AM by Jean-Philippe Cartailier



 **diskusage.jpg** - Added on August 14, 2013 at 8:45 AM by Jean-Philippe Cartailier



 **network.jpg** - Added on August 14, 2013 at 8:44 AM by Jean-Philippe Cartailier

