

MafA Rabbit Polyclonal

Jud's Basic Antibody staining protocol:

Step	Time	Temp	Reagent
Permeablize	30 minutes	RT	PBS + 0.2% Triton X 100
Block	1 hour	RT	PBS-T (0.2% Tween 20) + 0.5% BSA
wash	Rinse	RT	PBS-T
Primary	Overnight	4C	Primary AB in PBS-T (0.2% Tween 20) + 0.5% BSA
Wash 3x	5 min	RT	PBS-T (0.2% Tween 20)
Secondary	2 hours	RT	Secondary AB (1:1000) in PBS-T (0.2% Tween 20) + 0.5% BSA
Wash 2x	5 min	RT	PBS-T (0.2% Tween 20)
Wash 1x	5 min	RT	PBS
Mount		RT	Prolong-gold w/DAPI (10 uL per Adult Pancreatic Section). Seal with Cover slip

Keywords: [BL1225](#) [training resource](#)

Expand

Antibody Annotations

Clone Name	Not Provided
Antigen	MafA
Antigen Gene ID	Not Provided
Source of Antigen	Mouse
Type	Polyclonal
Isotype	Not Applicable
Group Type	Primary
Immunogen Source	Peptide
Peptide	N-terminal peptide
Raised in	Rabbit
Cross Reacts with	Unknown
Conjugation Type	Not Provided
Antigen Purity	Not Provided
Positive Control	Not Provided

Inventory Location

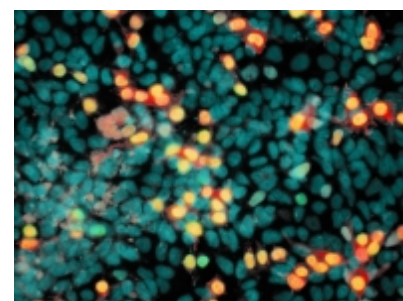
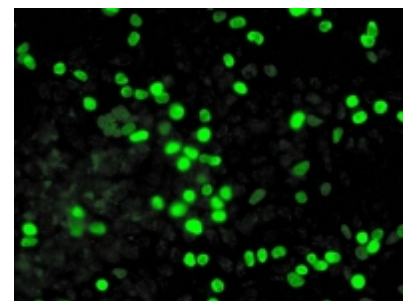
Private

Characterization Data

Microscopy

Notes	Not provided
Protocols	Juds_Basic_Antibody_Staining_P...

Images



Concentration	<i>Not Provided</i>
----------------------	---------------------

Source

Commercial	Bethyl Laboratories
-------------------	---------------------

Catalog #	<i>Not provided</i>
------------------	---------------------

Stock Date	<i>Not provided</i>
-------------------	---------------------
