

# Our Five Cores

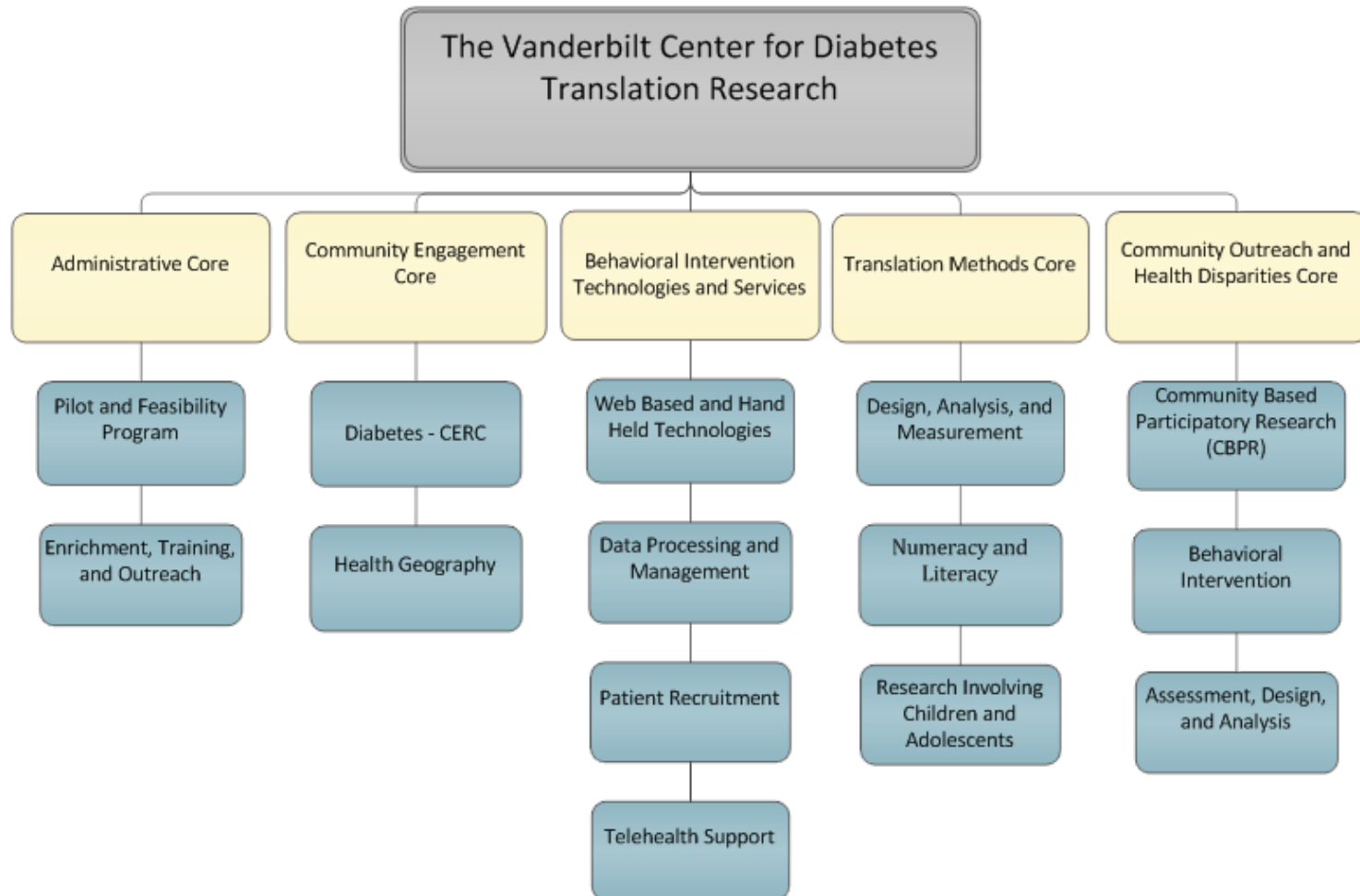
[Our News & Events Highlights »](#)

[Expand](#)

The Vanderbilt Center for Diabetes Translation Research consists of Five Cores:

- 1) [Translational Methods Core](#) led by Russell Rothman, M.D. MPP & Shari Barkin, M.D. MSHS
- 2) [Community Engagement Core](#) led by David Schlundt, Ph.D.
- 3) [Behavioral Intervention Technologies and Services Core](#) led by Sarah Jaser, Ph.D.
- 4) [Community Outreach & Health Disparities \(COHD\)](#) led by Margaret Hargreaves Ph.D.
- 5) Administrative Core

The CDTR and its Five Cores provide services to investigators with externally funded, diabetes-related translational research addressing the following areas: innovations in care, community engagement, culturally-sensitive/competent interventions, clinical trials, quality improvement, quality assurance, health services research, environmental studies, & community-based participatory research.



The Center for Diabetes Translation Research is supported by NIH grant DK092986. Please acknowledge this in your publications.